



## CYGNUS 1 Ex

### INTRINSICALLY SAFE ULTRASONIC THICKNESS GAUGE



An Intrinsically Safe Ex gauge, designed for taking reliable thickness measurements in mines and gas hazardous areas across all Zones 0, 1 & 2. No need for hot work permits. 3 measuring modes enable through-coat measurements for various materials and heavily corroded metals. Available with advanced data logging and manual measurement mode.

IDEAL FOR  
USE IN



FUEL  
DEPOTS



ROAD & VESSEL  
TANKERS



MINES



CHEMICAL  
PLANTS



OIL AND  
GAS

...refineries, pipelines and hazardous storage tanks.



**SELECTABLE OPTIONS**



**Cygnus High Temperature Ex Probe**

ATEX-certified high temperature probe for measuring hot surfaces up to 300°C (570°F) continuous. **No cooling period required** - reducing inspection time and facilitating more effective measurement.

**CERTIFIED INTRINSICALLY SAFE TO:**

**ATEX, IECEx and UKEX**  
 I M1 Ex ia Ma (Tamb = 0°C to +50°C)  
 II 1G Ex ia IIC T4 Ga (Tamb = 0°C to +50°C)

Certificate Numbers;  
 ATEX: ExVeritas 21ATEX0860X  
 UKEX: ExVeritas 21UKEX0861X  
 IECEx: IECEx EXV 21.0035X



**Comprehensive Data Logging**

- Datalogging: Basic (Linear lists) or Advanced (2D/3D Grids, Templates)

LEV	POS	North	East	South	West
LEV1	POS12	11.87	11.91	11.78	11.46
LEV2	POS13	11.92	11.71	11.41	11.74
LEV3	POS14	11.24	12.27	11.78	11.38
LEV4	POS5	12.83	11.24	12.45	12.13
LEV5	POS6	10.09			

Next Point: LEV1.POS6.East

- Allows a maximum of 10,000 measurement points per record
- 16 grid patterns available
- Add radial points to any measurement (linear/grid) to further investigate immediately an area of interest or heavy corrosion
- 8 User-defined text comments to attach to any measurement point
- Auto-log feature
- Saves measurements and A-scans as records on internal memory

**Cymlink Computer Software**

CygLink is a Windows® based application for computer use to display continuous A-Scan output and measurement data. CygLink has the facility to log both data formats into a Survey file for report presentation, which can be emailed, exported as a PDF, or printed.

**Three Selectable Measuring Modes**

Multiple-Echo mode uses three error checked back wall echoes to provide the most reliable and accurate remaining thickness measurements, with no need to remove coatings (up to 20mm/0.8 in thick).

Single-Echo mode is ideal for measuring uncoated metals with heavy front and/or back-wall corrosion. Also effective on many cast metals, plastics and composites.

Echo-Echo mode works best for measuring heavily corroded metals through thin coatings of up to 1mm/0.04in thick, ideal for measuring painted metals with heavy back wall corrosion.

Exclusive to Cygnus, Measurement Stability Indicator (MSI) ensures stable and therefore reliable measurements are displayed in Echo-Echo and Single-Echo modes.

**CYGNUS 1 Ex KEY FEATURES**

- Certified Intrinsically Safe to ATEX, IECEx, UKEX for Zone 0
- High temperature measurement capability
- Intrinsic Safety protection - No need for hot work permits
- 3 measuring modes for levels of corrosion, various materials and through-coat measurements
- Deep Coat function ignores thick coatings
- Manual Measurement Mode allows gates and gain to be configured to suit your application
- Live A-Scans aid visual measurement verification
- Live B-scans give a quick, cross-sectional representation
- 4 function keys for easy controls and dynamic views
- User Access feature protects specific access level records
- Measurement setup can be saved/restored for quick start
- Measurement Freeze function and Ref/Min/Max thickness limits
- Available as SC, TC, PLUS and PRO variants with options of upgradeable features



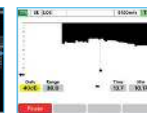
GO TO PRODUCT PAGE



LARGE 3.5" OUTDOOR READABLE DISPLAY



CYGLINK SOFTWARE



B-SCAN WITH AUTO START/ PAUSE/CONTINUE



LIVE A-SCAN FOR FURTHER VERIFICATION

## CYGNUS 1 Ex SPECIFICATION

Feature	Description
<b>Measuring Mode</b>	Single Echo with Twin Crystal Probes Echo-Echo with Twin Crystal Probes Multiple Echo with Singly Crystal Probes
<b>Materials</b>	Sound velocity from 1000 m/s to 9000 m/s [0.0390 in/us to 0.3543 in/us]
<b>Accuracy</b>	±0.1 mm (±0.004") or 0.1% of thickness measurement whichever is the greatest
<b>Resolution</b>	0.1mm, 0.05mm or 0.01mm depending on probe type
<b>Probe Options</b>	Single crystal, twin crystal and high temperature probes
<b>Measurement Range in Steel</b>	0.8mm to 250mm (0.031 in. – 10 in.) depending on selected probe and configuration, material and temperature
<b>Connector</b>	Single Dual Coaxial Connector
<b>Power Supply</b>	Rechargeable, removable Lithium-Ion battery pack
<b>Power Rating</b>	2W
<b>Probe Sockets</b>	Single Dual Coaxial Connector
<b>Battery Life</b>	6-8 hours continuous measurement
<b>Display</b>	3.5" VGA, sunlight readable colour display
<b>Size</b>	270mm tall, 135mm wide, 80mm deep
<b>Weight</b>	1 kg with battery
<b>Operating Temp.</b>	-0°C to +50°C (32°F to 122°F)
<b>Storage Temp.</b>	-10°C to +65°C (50°F to 149°F)
<b>Data Logging</b>	10,000 measurements and A-scans per record
<b>Computer Software</b>	CygLink allows remote logging and viewing of A-scan graphs. Survey and report generation to PDF file. Graphic analysis of data and statistical calculations. Bluetooth connection to transfer data to a Windows® computer with CygLink
<b>Certification</b>	<b>ATEX, IECEx and UKEX</b> I M1 Ex ia Ma (Tamb = 0°C to +50°C) II 1G Ex ia IIC T4 Ga (Tamb = 0°C to +50°C)  Certificate Numbers; ATEX: ExVeritas 21ATEX0860X UKEX: ExVeritas 21UKEX0861X IECEx: IECEx EXV 21.0035X
<b>Environmental Protection</b>	IP67 Pollution degree 3
<b>Standards</b>	Designed for BS EN 15317:2000
<b>Warranty</b>	3 years on gauge and 6 months on probe



Cygnus Instruments Ltd.  
Cygnus House  
30 Prince of Wales Road  
Dorchester  
Dorset DT1 1PW  
United Kingdom



ISS3 04/24

All information provided is subject to change without prior notice.

### Cygnus Headquarters

**Call** +44 (0) 1305 265 533  
**Email** sales@cygnus-instruments.com  
**Visit** cygnus-instruments.com

### Cygnus UAE

**Call** +971 50 3459305  
**Email** ribu@cygnus-instruments.com  
**Visit** cygnus-instruments.com

### Cygnus USA

**Call** +1 346 223 0415  
**Email** sales@cygnus-instruments.com  
**Visit** us.cygnus-instruments.com

### Cygnus Singapore

**Call** +65 6252 5909  
**Email** sales@cygnus-instruments.sg  
**Visit** sg.cygnus-instruments.com