

Cygnus 1 Ex – Variant Upgrade Instructions.

Issue 1

August 2022

Gauge Variants

The Cygnus 1 Ex gauge is available to customers in four **Variants**;

1. **Basic ME**
2. **Basic SE/EE**
3. **Professional**
4. **Advanced**

Each variant has a set of features, with the Advanced variant having all features available. In addition to this a limited range of additional features can be added to a variant if specified.

For example, the **Basic SE/EE** Variant could have the **A-Scan** feature adding.

Available Additional Features

1. Single Echo measurements
2. Echo-Echo measurements
3. Multiple Echo measurements and Deep Coat
4. A-Scan display
5. B-Scan
6. Manual Gates
7. High Temp Measurements and Manual Gates
8. Data Logging Advanced.

At Final Release

When a gauge is sold to a customer, at Final Release when the gauge is being prepared, its Variant and any Additional Features are set using the **M5-EX Factory Setup** utility. The sales order will contain details of the variant and any additional features purchased.

Customer Upgrades

A customer can upgrade their gauge by purchasing an **Update Code** from Cygnus. The customer must provide the following information from their gauge to generate the Update Code;

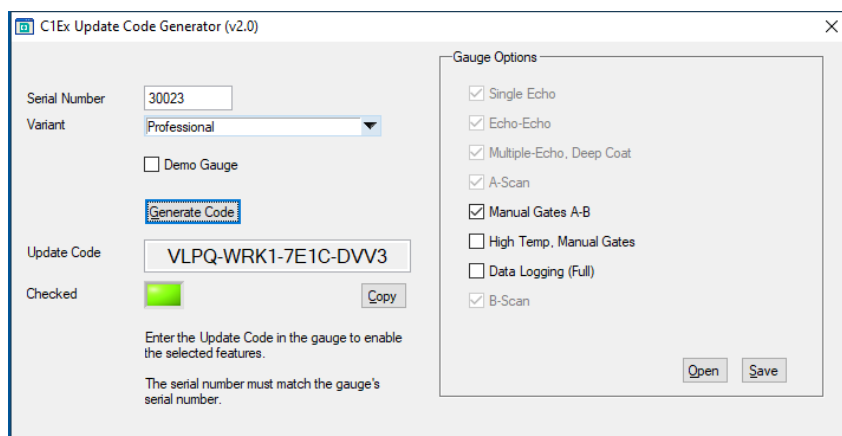
- The Serial Number
- The Feature Code (if this is not zero then additional features have been purchased)

This information is available from the **Menu->Setup->Gauge** Info screen. Cygnus then use the **M5-EX Feature Code Generator** utility to generate the Update Code.

Cygnus 1 Ex – Variant Upgrade Instructions.

Issue 1

August 2022



M5-EX Feature Code Generator

The Update Code generated can be “copied” in the paste buffer so it can be emailed to the customer;

```
** Cygnus 1 Ex Update Code **  
Gauge Serial No : 30023  
Gauge Variant   : PROFESSIONAL  
Additional      : Gates  
Update Code    : VLPQ-WRK1-7E1C-DVV3  
Generated on   : 17-Aug-2022 14:46
```

The customer then enters the Update Code into the gauge, and if the serial numbers match the gauge will be updated.

