

CYGNUS PROBE HANDLERS



Cygnus has a range of three probe handlers designed to specific purposes. The Cygnus S1 probe handler is designed for performing UTM surveys on ships' hulls using an observation or light work-class ROV. The Cygnus W1 Probe Handler is designed for Work Class ROVs and the Cygnus G1 Probe Handler is designed for observation, inspection and light-work class ROVs.

IDEAL FOR
USE IN



HULL UTM
INSPECTION



CIVIL
ENGINEERING



MARINE
STRUCTURES



OFFSHORE
PLATFORMS

...observation, inspection and light work-class ROVs

CYGNUS S1 PROBE HANDLER

The Cygnus S1 probe handler is designed for performing UTM surveys on ships' hulls using an observation or light work-class ROV. The two sets of magnets first grip the hull plate which allows the UT probe to tilt and align to the hull surface - ensuring the optimal measurement position. The S1 probe holder is constructed from acetal with stainless steel fixings keeping the overall weight down.



Probe Options

When ordering the S1 Probe Handler you must order the appropriate probe separately.

- S2C 2.25MHz Probe with nosecone for Mini ROV
P/N 001-8334
- S2C 2.25 MHz Probe with MCIL2M for M5 ROV
P/N 001-8335



Nosecone for Mini ROV



MCIL2M for M5 ROV

Dimensions



GO TO
PRODUCT
PAGE



Feature	Description
Size	175 x 150 x 85mm (6.9 x 6 x 3.3 inch) (excluding handle)
Weight in Air	0.29 kg (10 oz)
Depth Rating	500 meters (1,640 ft)
Material	Black acetyl with stainless fixings
Probe Types	2.25 MHz 13 mm with membrane (3.5 and 5 MHz at special request)
Probe Cable	0.95 m coaxial (other lengths at special request)
Warranty	3 years / 6 months on probes
Part Number	001-8331

Visit www.cygnus-instruments.com to explore our full product range

CYGNUS W1 PROBE HANDLER

Designed for Work Class ROVs, the Cygnus W1 probe handler is constructed from 316 stainless steel throughout and can be held by a manipulator arm by either a T bar or Fish Tail handle. Its double jointed coupling provides 15 degrees of movement in both planes guided by four pins - giving the optimal alignment. A shock absorbing spring reduces any impact. Any misalignment will be taken up by the coupling resulting in less movement of the manipulator arm position.



Probe Options

When ordering the W1 Probe Handler you must order the appropriate probe separately

- S2C 2.25MHz Probe for M5 ROV
P/N 001-8364
- S2C 2.25MHz Probe with nosecone for M4 ROV P/N 001-8317

Manipulator Handles

- 1/2" T-Bar Handle P/N 001-8315
- 3/4" T-Bar Handle P/N 001-8314
- Fishtail Handle P/N 001-8316

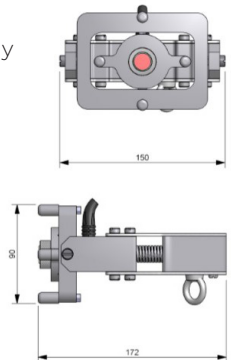


Fishtail Handle



T-Bar Handle

Dimensions



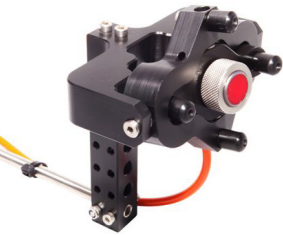
GO TO
PRODUCT
PAGE



Feature	Description
Size	170 x 150 x 90mm (6.7 x 6 x 3.5 inch) (excluding handle)
Weight in Air	5kg (11 lbs)
Depth Rating	500 meters (1,640 ft)
Material	316 stainless steel
Spring Force	15 kg spring starts to compress
Probe Types	2.25 MHz 13mm with membrane (3.5 and 5 MHz at special request)
Probe Cable	5m double jacket coaxial (other lengths at special request)
Warranty	3 years / 6 months on probes
Part Number	001-8311

Call our team today on +44 (0) 1305 265 533 for expert product advice

CYGNUS G1 PROBE HANDLER

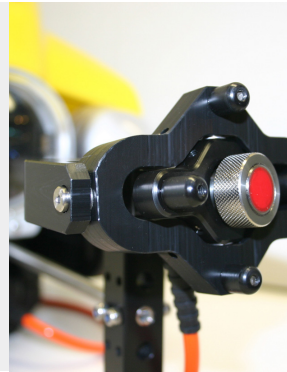


CYGNUS G1 PROBE HANDLER

GO TO
PRODUCT
PAGE



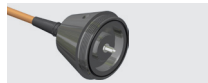
Designed for observation, inspection and light-work class ROVs. Constructed from acetal, it is both strong and lightweight. It features an adjustable mounting bracket allowing optimum positioning of the UT probe. The UT probe is located in an articulated mount that allows up to 15 degrees of movement in both planes allowing automatic alignment of the probe face to the measurement surface making the ROV pilot's job easier.



Probe Options

When ordering the G1 Probe Handler you must order the appropriate probe separately.

- S2C 2.25MHz Probe with nosecone for Mini ROV **P/N 001-8354**
- S2C 2.25 MHz Probe with MCIL2M for M5 ROV **P/N 001-8355**

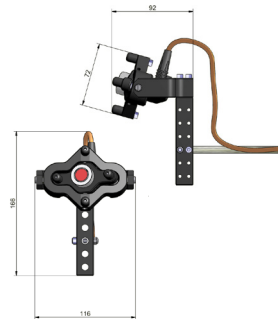


Nosecone for Mini ROV



MCIL2M for M5 ROV

Dimensions



Feature	Description
Size	92 x 116 x 166mm (3.6 x 4.6 x 6.5 inch)
Weight in Air	0.3 kg (0.66 lbs)
Depth Rating	500 meters (1,640 ft)
Material	Acetyl with 316 stainless steel fixings
Probe Types	2.25 MHz 13 mm with membrane (3.5 and 5 MHz at special request)
Probe Cable	0.95 m double jacket coaxial (other lengths at special request)
Warranty	3 years / 6 months on probes
Part Number	001-8351



Cygnus Instruments Ltd.
Cygnus House
30 Prince of Wales Road
Dorchester
Dorset DT1 1PW
United Kingdom



ISS1 03/21

All information provided is subject to change without prior notice.

Cygnus Headquarters

Call +44 (0) 1305 265 533
Email sales@cygnus-instruments.com
Visit cygnus-instruments.com

Cygnus UAE

Call +971 50 3459305
Email ribu@cygnus-instruments.com
Visit cygnus-instruments.com

Cygnus USA

Call +13462230415
Email sales@cygnus-instruments.com
Visit us.cygnus-instruments.com

Cygnus Singapore

Call +65 6252 5909
Email sales@cygnus-instruments.sg
Visit cygnus-instruments.com/sg/