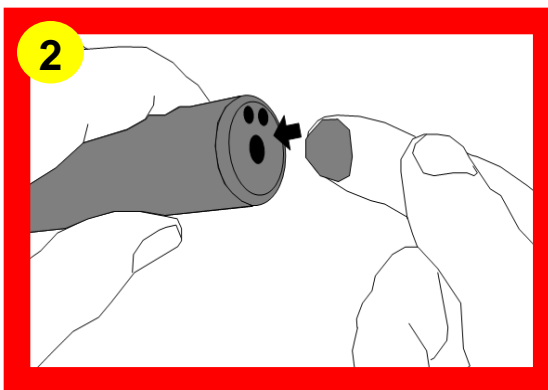


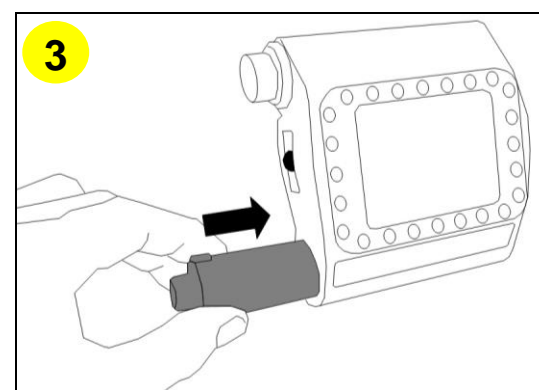
Cygnus Instruments DIVE Quick Start Guide



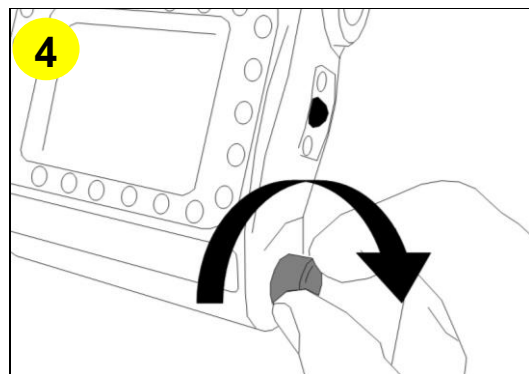
Smear some silicon grease on to a finger



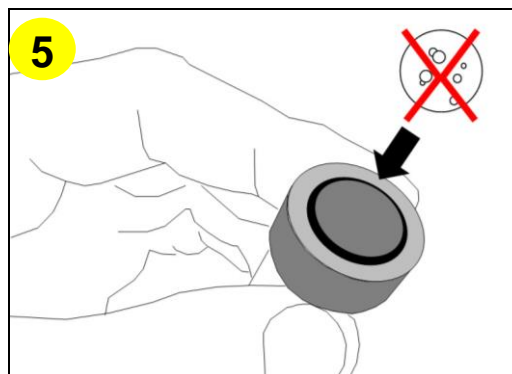
apply to the battery contact face



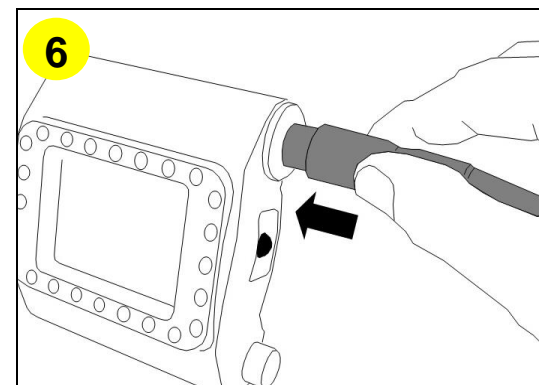
insert the battery, the gauge will turn on



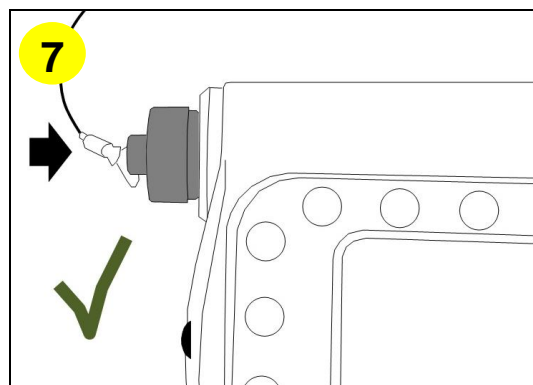
tighten the battery screw finger tight



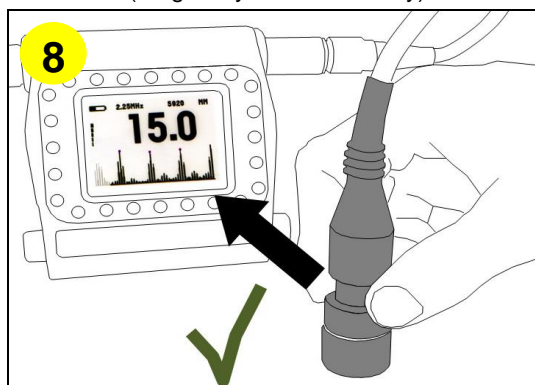
check the probe membrane for air bubbles
(Single Crystal Probes only)



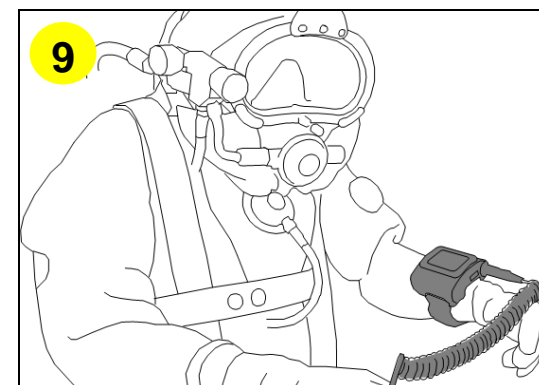
push the probe connector in until it clicks



check the cap is fitted



test gauge operation on the test block

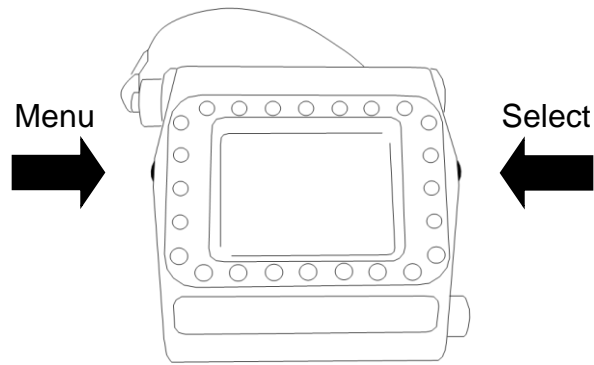


fit to the diver and go!

Not following steps 1 and 2 – applying silicone grease to the battery - could result in invalidating your warranty.

For more detailed information please refer to the User Manual

Menu Navigation



MAIN MENU

CALIBRATE or VELOCITY

UNITS (MM/INCH)

RESOLUTION (HIGH/LOW)

DEEP COAT (ON/OFF)

DISPLAY MENU

A-SCAN RANGE

DISPLAY COLOUR

A-SCAN DISPLAY (ON/OFF)

DATA LOG MENU *(if available)*

START or STOP LOGGING

START NEW GROUP

CLEAR MEMORY

DATA LOGGING STATUS

SETUP MENU

BACKLIGHT TIMER

BACKLIGHT LEVEL

HELMETVIEW LEVEL

DATA COMS MODE

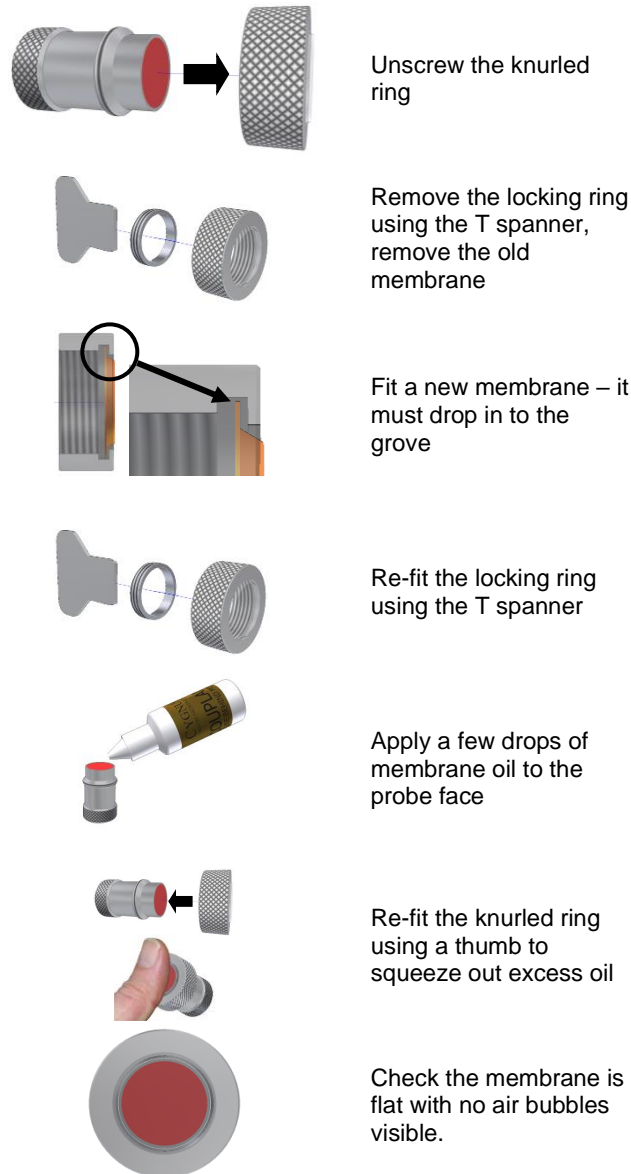
DLOG HOLD TIME

DLOG RELEASE COUNT

Probe Membrane Replacement

(Single Crystal Probes only)

for optimum performance replace the membrane



Unscrew the knurled ring

Remove the locking ring using the T spanner, remove the old membrane

Fit a new membrane – it must drop in to the groove

Re-fit the locking ring using the T spanner

Apply a few drops of membrane oil to the probe face

Re-fit the knurled ring using a thumb to squeeze out excess oil

Check the membrane is flat with no air bubbles visible.

Velocity of Sound Table

Material	Velocity of Sound (V)	
	m/s	in/us
Aluminium (alloyed)	6380	0.2512
Aluminium (2014)	6320	0.2488
Aluminium (2024 T4)	6370	0.2508
Aluminium (2117 T4)	6500	0.2559
Brass (CuZn40)	4400	0.1732
Brass (Naval)	4330	0.1705
Brass (CuZn30)	4700	0.1850
Copper	4700 - 5000	0.1850 – 0.1969
Grey Cast Iron	4600	0.1811
Inconel	5700	0.2244
Lead	2150	0.0846
Monel	5400	0.2126
Mild Steel	5920	0.2331
Tool Steel	5870	0.2311
Stainless Steel 302	5660	0.2228
Stainless Steel 347	5790	0.2279
Stainless Steel 314	5715	0.2250
Stainless Steel 316	5750	0.2264
F51 Duplex Steel UNS S31803	5715 - 5750	0.225 – 0.2264
Core Ten Steel EN12223 S355-J0	5920	0.2331
Titanium	6100 - 6230	0.2402 – 0.2453
Tungsten Carbide	6660	0.2622